

EVOLUTION
LONDON

TECHNICAL PRODUCTION GUIDE

2021



encore

EVENTS THAT TRANSFORM

CONTENTS



| | | | |
|-------------------------------|----|-----------------------------|-----|
| About Encore | p3 | House Costs | |
| Technical Specification | p5 | Lighting | p10 |
| Lighting | p5 | Rigging | p10 |
| Dimming, Power and Networking | p6 | Power | p11 |
| Sound | p6 | House Technicians | p11 |
| Drapes | p7 | Site Layout | p12 |
| Power | p7 | Frequently Asked Questions | p13 |
| Electrical Testing | p7 | Contact Us | p14 |
| House Technicians | p8 | | |
| Rigging, Truss and Motors | p8 | | |
| Weight Loadings | p8 | | |
| Access Equipment | p8 | | |

ABOUT ENCORE

As the leading global event production company, we transform events into immersive, collaborative experiences that deliver real results.

Encore unites industry leaders Hawthorn, KFP, PSAV, eclipse, AVC Live, Hargrove and Encore Event Technologies, into one industry powerhouse. Hawthorn have been the incumbent technical supplier to Evolution London since 2008 so have an in-depth knowledge of this versatile venue. Now part of the Encore team, we combine this comprehensive understanding with our improved, extensive group portfolio of technical and creative solutions, providing even more value to our clients

With a rich heritage built on comprehensive end-to-end and exclusive in-house capabilities, we deliver spectacular bespoke technical solutions that set global standards for industry best practices. Our unmatched depth of creative, production, and technology services support customers through every step in the event planning and management process.

With a global footprint reaching more than 20 countries, our team of creators and experts activate events of all types – in-person, virtual and hybrid. We work closely with event organisers, hotels, venues, agencies, and staging customers to create and execute thousands of live events annually across the globe.

Whether you're looking for a slick conference production, an exclusive experiential showcase for a global brand or putting on the party to end all parties, our expert team will work alongside you to bring your vision to life.



ABOUT ENCORE

- We have been the incumbent technical supplier to Evolution London since 2008.
- We offer a complete creative technical production service for all types of events, from design and visuals through to lighting, sound, video, set design and build, rigging and power installation.
- In the past 3 years alone, we've been responsible for the total production of over 120 events at Evolution and supplied house services to numerous more.
- With a vast array of technical equipment and continued annual investment at Evolution there is no stone left unturned when maximising efficiency and knowing what is and isn't possible in the space.
- We pride ourselves on our long term collaboration with Smart Group and the seamless combined working relationship with Evolution London that has led to us being recognised as one of the leading technical production teams in the London market place.
- We deliver a broad range of events within Evolution combining all of our resources under one roof. We aim to surpass client expectations, supporting them throughout the entire event planning process with the guest experience always the focus of our attention.

EXCLUSIVITY

We are the exclusive technical production supplier at Evolution London. Whilst you are able to bring in another production supplier, please be aware that a buyout and commission on production spend will be payable to Evolution London. Please liaise with your venue contact for more information.

Please note: if you choose to bring your own production company, we must still supply rigging and power services.



TECHNICAL SPECIFICATION

Evolution London has a comprehensive lighting and sound package that is included within the venue hire. The following pages outline the technical specifications for these services as well as optional upgrades. Please refer to House Costs (page 10) for associated charges and further detail.

Please note: the information held within this brochure is applicable outside of the Christmas season, when a more comprehensive package is included.

LIGHTING

Outside

LED colour changeable lighting is provided to the front facade of the building, under the entrance canopies and in the surrounding trees.

Evolution – Atrium Mezzanine

- 130 LED fixtures provide architectural lighting of the roof structure and floor of the entrance area and mezzanine.

The above fixtures are suspended from five trusses within the roof space. These trusses are for venue architectural lighting installations only and cannot be used for additional production equipment.

Main Event Space

- LED starcloth roof (RGB colour changeable) of the event space that can be set to static colours or simple effects. This can also be controlled by a lighting desk if you wish to incorporate into a larger lighting design.
- 56 Chroma Floods to provide an LED colour changeable wash of the entire room.
- Fluorescent lighting can be selected in rows for a customisable working light throughout the
- Pinpoint lights can be provided to achieve a cost effective solution to table lighting. Available at extra cost – please see pricing card.

TECHNICAL SPECIFICATION

DIMMING, POWER AND NETWORKING

Power and Dimming

Socapex feeds are offered around the venue. These are supplied as either full 'hot' or 'dimmed' supplies – dimmed supplies being controllable through the house Art-Net system.

Art-Net and DMX

Venue equipment is controlled through Art-Net. Please contact us for more information on the Art-Net infrastructure, configuration and capabilities.

DMX feeds are available throughout the venue, accessible via the Art-Net system.

Art-Net, DMX, power and dimming are charged separately, please see Page 10.

Networking

Evolution London is equipped with a complex network infrastructure, patchable around the venue from the roof and at key points on the walls.

This multi-purpose system is compatible with sound, video and lighting networks.

SOUND

The venue package includes a sound system for background music and announcements, incorporating:

- 4 Tannoy V12-HP speakers in the atrium.
- 14 Tannoy VX5.2 speakers covering the mezzanine.
- 42 Tannoy V12-HP speakers in the main space.
- Audio 'tie lines' allow inputs into the house system. Inputs/outputs locations are available on request.

The sound system can be split into zones throughout the venue using BSS Soundweb.

The venue sound system is designed for background music and announcements only. We strongly advise that a separate system is installed for live events. Our team of experts can provide advice on what equipment would best meet your needs.

TECHNICAL SPECIFICATION

DRAPES

Wall Drapes

Black wool serge drapes are fitted as standard around the perimeter of the main space. These can be removed on request at additional cost.

Mezzanine Drape Divide

A retractable black wool serge drape is fitted, enabling organisers to separate the mezzanine and main event space.

Main Space Drape Divide

A dividing drape can be supplied at additional cost, for example to separate the bar area from the main space. This is suspended from a house truss and can be supplied at a reduced rate at certain locations within the venue – please refer to site layout on page 12 and speak to us for more information.

POWER

Encore supply all mains power within the venue which is chargeable according to your requirements.

We can provide three-phase power for you to distribute or provide power distribution around the venue down to 13a supplies.

Please note: power feeds are not included within venue rental at Evolution London and all items requiring power must be considered.

Power consumption is charged separately by the venue.

ELECTRICAL TESTING

Wandsworth Council require all electrical installations to be installed and tested to BS7909 (Temporary Electrical Systems in the Entertainment Industry).

Encore will provide a cost within your quote for electrical testing of our supplies. Any electrical equipment brought into the venue must also be tested – by either Encore or a qualified person, with a copy of the test certificate submitted to the venue.

We are NICEIC certified so you can be confident that all testing will be carried out to the highest of standards.



TECHNICAL SPECIFICATION

HOUSE TECHNICIANS

A house technician is required for the duration of the tenancy of your event and must be on site at all times when the venue is occupied.

One of Encore's experienced technicians will be provided inclusive of the venue hire for the first 24 hours of your tenancy, after which additional costs will be charged per 12 hour shift (see page 11 for further pricing information).

RIGGING, TRUSS AND MOTORS

Encore provides rigging throughout the venue, including truss, motors and anything else that attaches to the roof of the structure.

The house truss is black Total Fabrications LD30 (30cm x 30cm). We also hold a large stock of Prolyte truss to meet any additional requirements.

Battersea is fitted with High Node and Low Node rigging points, as illustrated on page 12:

- High Node – these have the maximum weight loading capacity and allow maximum trim height as the motors travel through the starcloth roof.
- Low Node – these have a lower weight loading capacity, the motors fix to the rigging brackets below the starcloth and result in a lower trim.

The maximum permissible distance between rigging points is 10m and cantilevers are possible up to 1m from the point. Bridles are not allowed in this venue.



WEIGHT LOADINGS

All rigging designs must be submitted to Encore at least 14 days in advance of your event for structural signoff.

We advise that you speak to us during the design of your event to ensure that it is within the allowable weight limits of the structure.

ACCESS EQUIPMENT

Encore is the mandatory supplier of all access equipment at Evolution London, including scissor lifts, cherry pickers and fork lifts.

Up to four JLG 1930 and three JLG 2632 scissor lifts are available in-house as a reduced rate and are available from the beginning to the end of your tenancy. Please contact us to discuss the requirements for your event.

HOUSE COSTS

Basic, per item house costs are outlined in the following pages. Please contact Encore's dedicated Evolution London team to discuss your event in more detail and we will be happy to supply an accurate quotation based on your specific requirements:

e: evolution-ldn-uk@encoreglobal.com

t: 01223 897 690



HOUSE COSTS

LIGHTING

| | |
|-------------------------|------------------|
| Pinspot | £12.60 per unit |
| DMX | £29 per feed |
| Art-Net | £29 per feed |
| Socapex (Hot or Dimmed) | £134.50 per unit |

RIGGING

Chain Hoists

Per tenancy period

| | |
|---|---------------|
| 2 Ton motorised chain hoist Includes top fix point | £189 per unit |
| 1 Ton motorised chain hoist Includes top fix point | £122 per unit |
| 0.5 Ton motorised chain hoist Includes top fix point | £102 per unit |

Motor Controllers

| | |
|---|------------------|
| 8 way motor controller Includes cabling | £302 per unit |
| 12 way motor controller Includes cabling | £452.50 per unit |
| 16 way motor controller Includes cabling | £602 per unit |

Truss

Per tenancy period

| | |
|---|------------------|
| Truss | £23.60 per metre |
| Total Fabrication LD box truss | |
| Truss | £12 per metre |
| Drape ladder | |
| Scaffolding tube | £2.60 per metre |
| Corner blocks | £54.60 per unit |
| Dead hang rigging point to 50kg Includes top fix and drop wire | £38 per unit |
| Other truss available on request | £POA |

Labour and Miscellaneous

Prices are per shift (10 hours) including breaks

| | |
|---|---------|
| Crew Chief | £450.50 |
| Rigger | £416 |
| Design approval and sign-off Subject to complexity of design | £330 |

Scissor Lifts

Prices are per tenancy period, up to a maximum of one week, up to a maximum of seven machines

| | |
|----------------------------------|-----------|
| JLG 1930 & JLG 2362 scissor lift | £230 each |
| Additional access equipment | £POA |

Room Divide Truss and Drape

| | |
|---|------|
| Internal reception divider truss With single-sided black wool serge drapes | £982 |
| Internal reception divider truss Without drapes | £586 |

Drapes

| | |
|-----------------------------|-------------------|
| Full height drapes metre | £14.70 per linear |
|-----------------------------|-------------------|

HOUSE COSTS

POWER

Per tenancy period

16A/13A Single Phase £70 per feed

32A Single Phase £110 per feed

32A Three Phase £138 per feed

63A Three Phase £220 per feed

125A Three Phase £410 per feed

400A Three Phase £1,705 per feed

Hardshell Cable Ramp £19 per metre
To protect power cables across access routes

Encore can also supply power distribution boxes at additional cost for your event.

Please note: power consumption will be charged separately by the venue

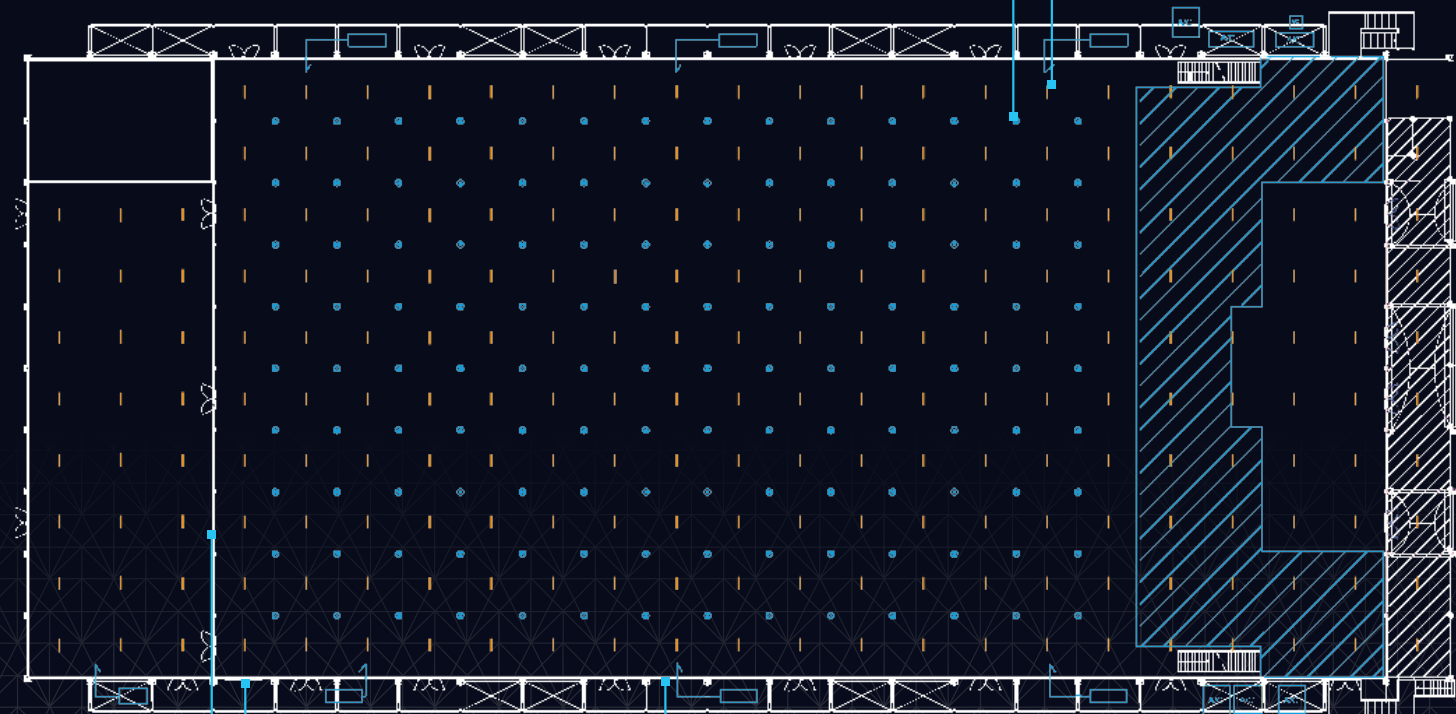
HOUSE TECHNICIANS

House Technician is included for the first 24 hours of your tenancy £included

House Technician per 12 hour shift for remainder of tenancy £398

Electrical Signoff to BS7909 for your event £458

SITE LAYOUT



FIXED KITCHEN WALL
Removable at additional cost

ROLLER SHUTTER DOOR

BLACK WOOL SERGE WALL DRAPES
Removable at additional cost

HIGH NODE

LOW NODE

FREQUENTLY ASKED QUESTIONS

What is the trim height in Evolution London?

Due to the curved roof, trim heights vary across the venue. As a guide, truss entirely from High Nodes can achieve a trim height of approximately 8m. Please contact our team to request a AutoCAD file for illustration however if you require a specific height it's advised that the client measures on site.

What is the maximum number of dimmed power feeds available?

Encore can provide up to 96 ways of dimming as standard with capacity to expand the house infrastructure if required. Please note that the 6 way Socapex feeds provided are either full hot or full dimmed, provided in a sequential order.

Why do we need electrical sign-off?

This is a mandatory requirement from Wandsworth Council. Standard operating procedure is Encore provides this for all incoming events, you are able to provide this document yourself using a suitably qualified electrician – please inform us in advance.

Can power be bought up through the floor?

Power is either dropped from the roof or run from the walls. It is possible to bring power up through the floor however this will incur additional costs. Please get in touch to discuss any specific requirements you have for your event.

What is the maximum power available on site?

The site is fed by four 400A supplies, some of which are occupied by the house infrastructure such as the kitchens and air handling. Generators can be provided where required however please contact us to discuss your specific requirements.

What is the maximum weight loading at Evolution London?

We cannot provide a general weight loading for the structure, all events must be signed off by one of our structural engineers. Please send us your event designs as soon as you are able so that we can check that it is within the allowable weight loading of the structure.



EVOLUTION

L O N D O N

Speak to our friendly and knowledgeable team to discuss
your next event at Evolution London:

e: evolution-ldn-uk@encoreglobal.com

t: 01223 897690

w: encore-emea.com